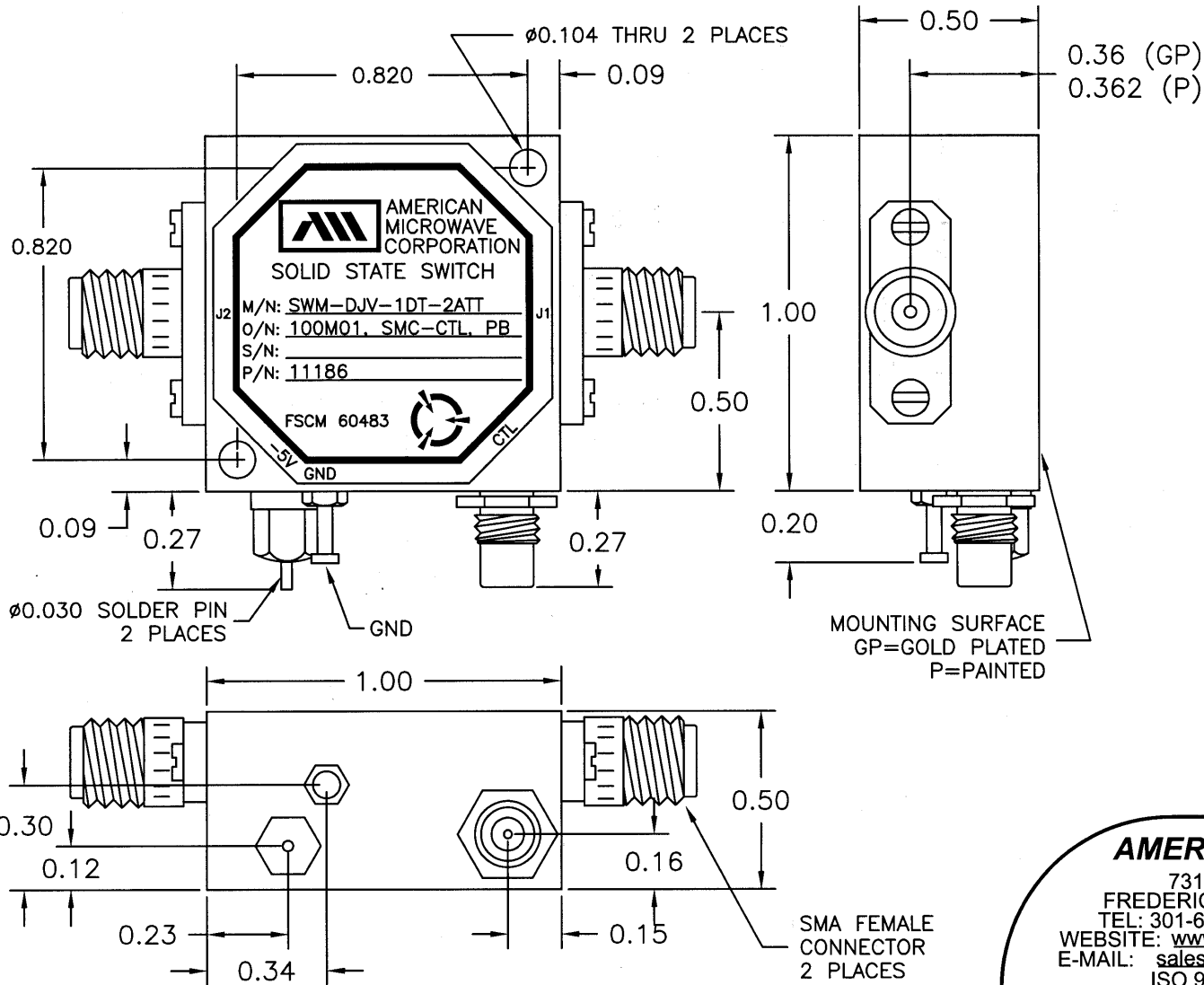


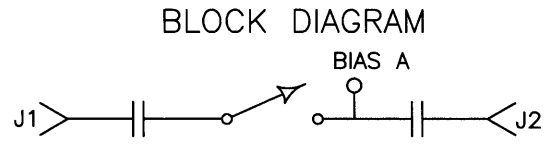
# DESCRIPTION

AMC MODEL SWM-DJV-1DT-2ATT OPTION: 100M01, SMC-CTL, PB IS AN ABSORPTIVE/NON-REFLECTIVE SINGLE POLE SINGLE THROW SWITCH MODULE DESIGNED TO OPERATE BETWEEN THE 100 TO 1000 MHz FREQUENCY RANGE.

REVISIONS				
ZONE	REV.	DESCRIPTION	DATE	APPROVED
	-	ORIGINAL RELEASE JOB# 411281-1PE	2/9/05	



## MECHANICAL OUTLINE



ALL DIMENSIONS ARE IN INCHES  
TOLERANCES:  
X.XX ±0.020  
X.XXX ±0.010

## AMERICAN MICROWAVE CORPORATION

7311-G GROVE ROAD  
FREDERICK, MARYLAND 21704 USA  
TEL: 301-662-4700 FAX: 301-662-4938  
WEBSITE: [www.americanmicrowavecorp.com](http://www.americanmicrowavecorp.com)  
E-MAIL: [sales@americanmicrowavecorp.com](mailto:sales@americanmicrowavecorp.com)  
ISO 9001:2000 CERTIFIED



APPROVALS		DATE	TITLE		
DRAWN <i>gdf</i>		2/9/05	MECHANICAL OUTLINE SWM-DJV-1DT-2ATT OPTION: 100M01, SMC-CTL, PB 100 - 1000 MHz, SINGLE POLE SINGLE THROW SWITCH		
CHECKED			SIZE A	FSCM NO. 60483	DWG NO. 100-7328
ISSUED					REV. -
SCALE N:S				SHEET 2 OF 3	

## DESCRIPTION

AMC MODEL SWM-DJV-1DT-2ATT OPTION: 100M01, SMC-CTL, PB IS AN ABSORPTIVE/NON-REFLECTIVE SINGLE POLE SINGLE THROW SWITCH MODULE DESIGNED TO OPERATE BETWEEN THE 100 TO 1000 MHz FREQUENCY RANGE.

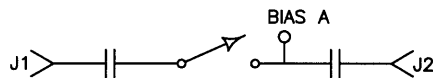
## SPECIFICATIONS

- FREQUENCY RANGE: ..... 100 TO 1000 MHz
- INSERTION LOSS: ..... 5.0 dB MAXIMUM
- ISOLATION: ..... 50 dB MINIMUM
- VSWR: ..... 2.0:1
- RISE TIME: ..... 6 nSec MAXIMUM
- FALL TIME: ..... 6 nSec MAXIMUM
- DELAY ON: ..... ≤ 75 nSec MAXIMUM
- DELAY OFF: ..... ≤ 75 nSec MAXIMUM
- POWER INPUT: ..... ≤ +17 dBm
- CONTROL: ..... TTL LOGIC "0" = ON  
TTL LOGIC "1" = OFF
- POWER SUPPLY: ..... -15V @ 25 mA MAXIMUM
- CONNECTORS:  
RF: ..... SMA FEMALE  
CONTROL: ..... SOLDER PIN
- SIZE: ..... 1.00" (L) x 1.00" (W) x 0.50" (H)

## OPTIONS:

- 100M01: ..... OPTIMIZED FOR 100 TO 1000 MHz FREQUENCY RANGE
- SMC-CTL: ..... SMC CONTROL CONNECTOR
- PB: ..... SPECIALIZED FOR PETE BOHLEY

BLOCK DIAGRAM



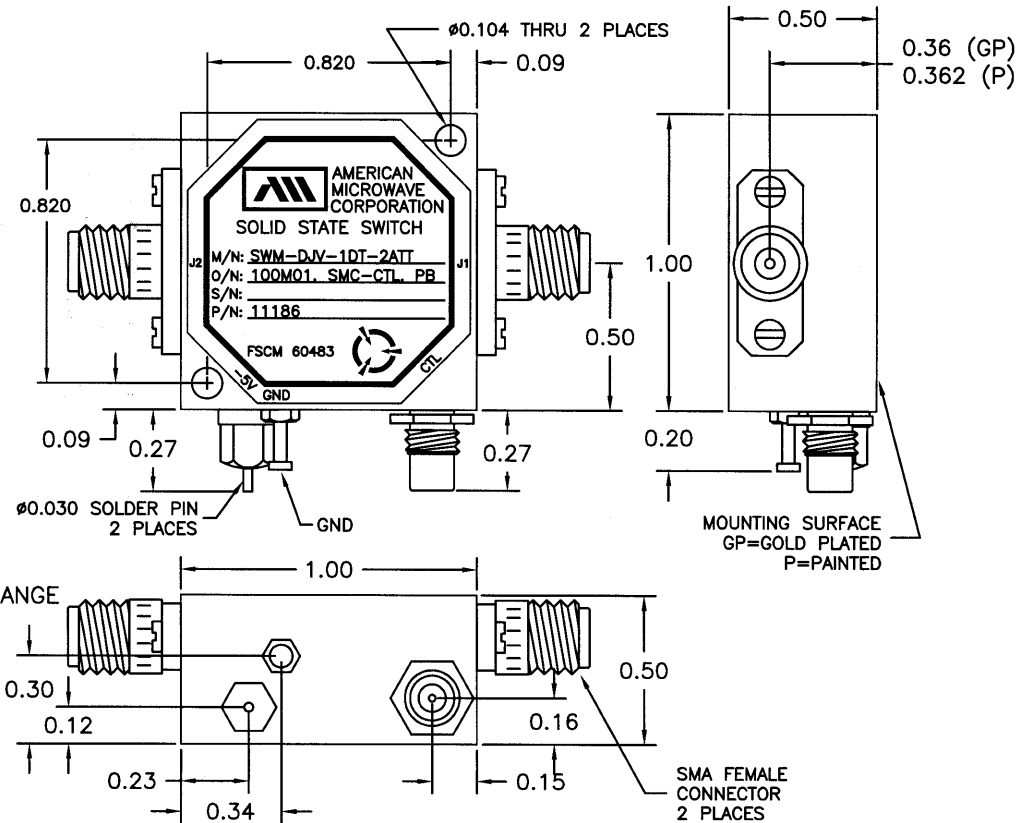
## ENVIRONMENTAL RATINGS:

- TEMPERATURE: ..... -55°C TO +85°C (OPERATING)  
-65°C TO +125°C (STORAGE)
- HUMIDITY: ..... MIL-STD-202F, METHOD 103B COND. B
- SHOCK: ..... MIL-STD-202F, METHOD 213B COND. B
- VIBRATION: ..... MIL-STD-202F, METHOD 204D COND. B
- ALTITUDE: ..... MIL-STD-202F, METHOD 105C COND. B
- TEMPERATURE CYCLE: ..... MIL-STD-202F, METHOD 107D COND. A

NOTE: SPECIFICATIONS WILL VARY OVER OPERATING TEMPERATURE  
NOTE: THE ABOVE SPECIFICATIONS ARE SUBJECT TO CHANGE OR REVISION

ALL DIMENSIONS ARE IN INCHES  
TOLERANCES:  
X.XX ±0.020  
X.XXX ±0.010

REVISIONS				
ZONE	REV.	DESCRIPTION	DATE	APPROVED
-	-	ORIGINAL RELEASE JOB# 411281-1PE	2/9/05	



## AMERICAN MICROWAVE CORPORATION

7311-G GROVE ROAD  
FREDERICK, MARYLAND 21704 USA  
TEL: 301-662-4700 FAX: 301-662-4938  
WEBSITE: [www.americanmicrowavecorp.com](http://www.americanmicrowavecorp.com)  
E-MAIL: [sales@americanmicrowavecorp.com](mailto:sales@americanmicrowavecorp.com)  
ISO 9001:2000 CERTIFIED



APPROVALS		DATE	TITLE			
DRAWN <i>JDJ</i>		2/9/05	PRODUCT FEATURE SWM-DJV-1DT-2ATT OPTION: 100M01, SMC-CTL, PB 100 - 1000 MHz, SINGLE POLE SINGLE THROW SWITCH			
CHECKED			SIZE	FSCM NO.	DWG NO.	REV.
			A	60483	100-7328	-
ISSUED			SCALE N:S		SHEET 1 OF 3	